



ARISTON

SPARE PARTS EXPLODED VIEW GAS-WALL BOILER ATM. BURNER

Model

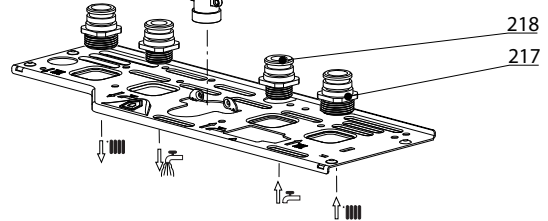
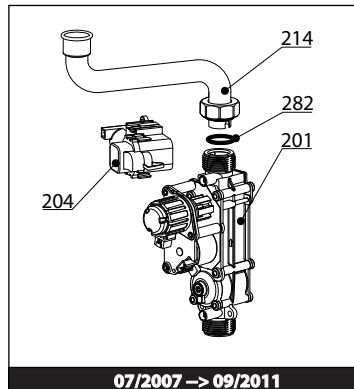
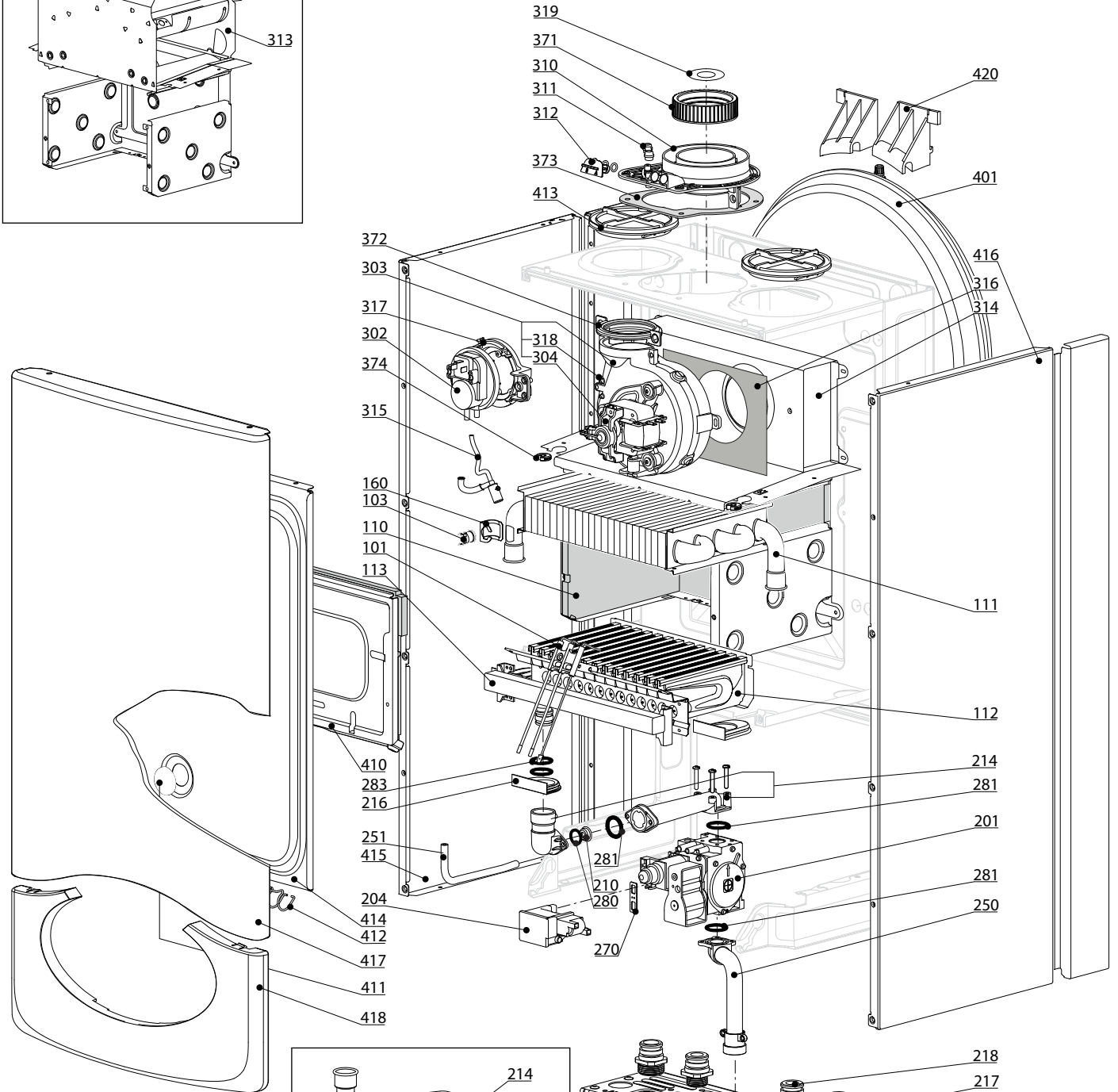
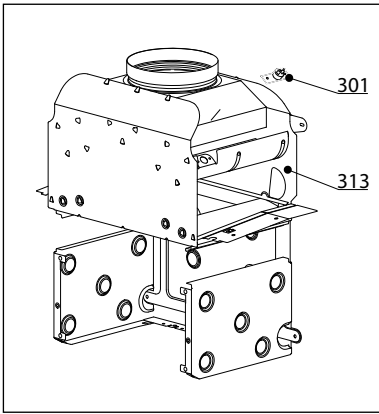
MATIS

R8203259-06 - 29/12/2015

MATIS

Gas-wall boiler atm. burner

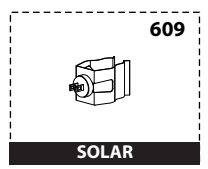
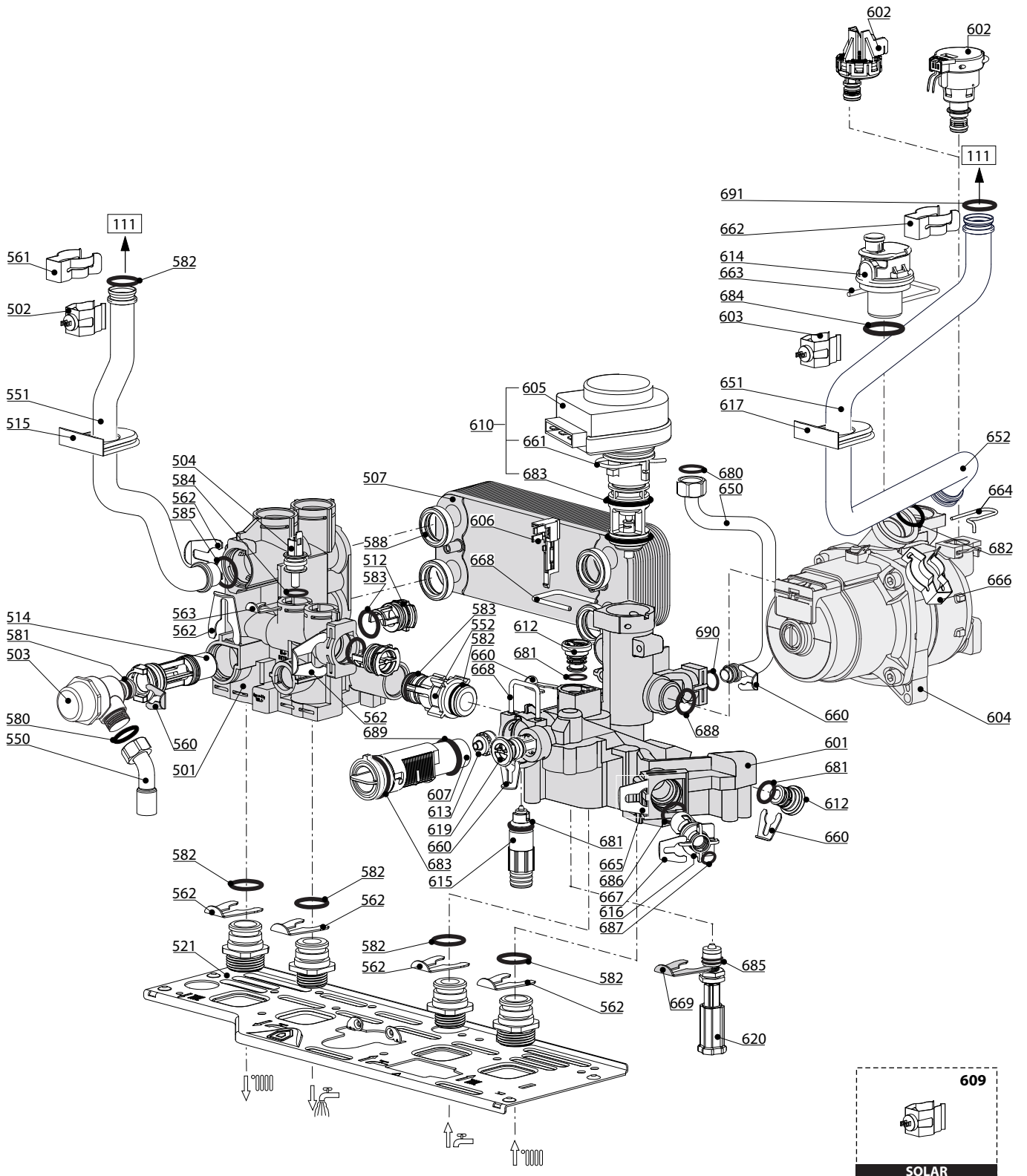
1	3300443	MATIS 24 CF NG	11-2011	-
1	3300405	MATIS 24 CF NG	02-2011	12-2011
1	3300445	MATIS 24 CF LPG	11-2011	-
1	3300404	MATIS 24 CF LPG	02-2011	12-2011
2	3300809	MATIS 24 CF NG EU		
3	3300407	MATIS 24 FF NG	02-2011	12-2011
3	3300442	MATIS 24 FF NG	11-2011	-
3	3300406	MATIS 24 FF LPG	02-2011	12-2011
3	3300444	MATIS 24 FF LPG	11-2011	-
Col	Reference	Model type	Begin	End

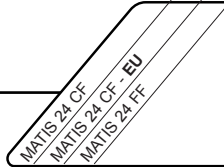



07/2007 -> 09/2011

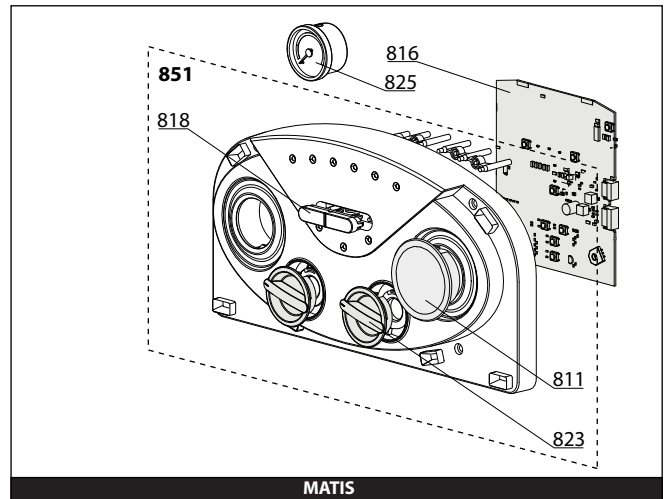
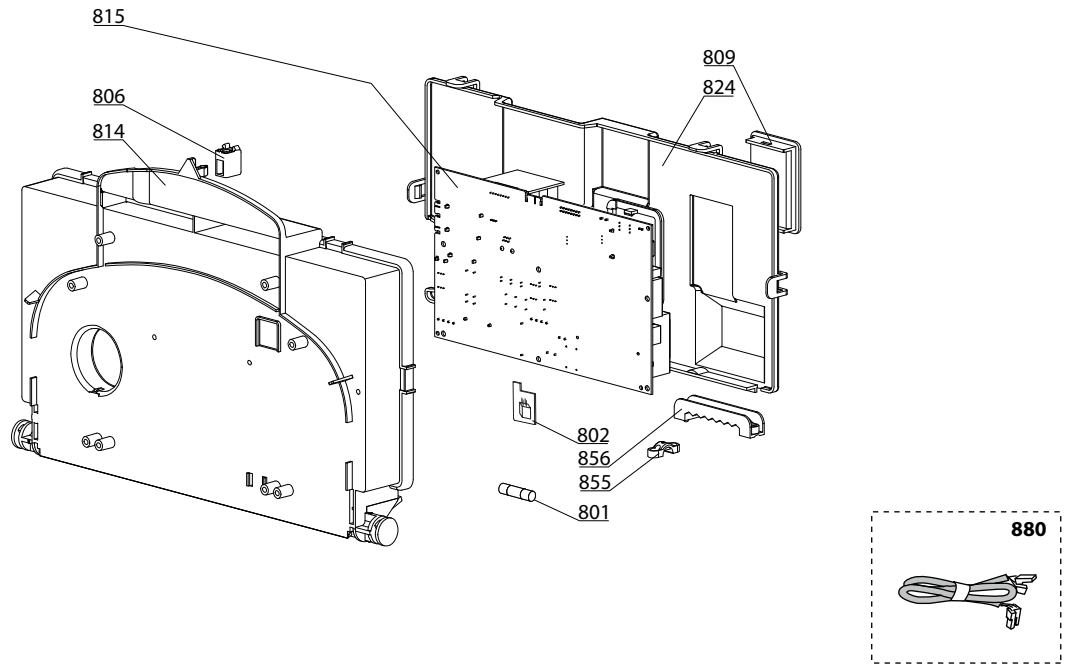
☉➔	Description	Manf. Pt. N	Type	<div style="display: flex; justify-content: space-between; align-items: center;"> <div style="writing-mode: vertical-rl; transform: rotate(180deg); font-size: 8px;"> MATIS 24 CF MATIS 24 CF - EU MATIS 24 FF </div> <div style="border: 1px solid black; padding: 2px; font-size: 10px; font-weight: bold;">31</div> </div>																		From	to
				1	2	3	4	5	6	7	8	9	10	11	12	13	14	15	16	17	18		
0100	BURNER ASSEMBLY																						
0101	ELECTRODE (IGNITION/IONIZATION)	65104549		●	●																		
0103	THERMOSTAT 102°	65104500		●	●	●																	
0110	PANELS (KIT)	65104695		●	●																		
	PANELS (KIT)	65106298				●																	
0111	HEAT EXCHANGER	65104247		●	●																		
	HEAT EXCHANGER	65106297	Nota 1			●																	
	HEAT EXCHANGER (KIT)	65113396	Nota 2			●																	
0112	BURNER 11NP	65106294				●																	
	BURNER 13NP	60001582		●	●																		
0113	GAS MANIFOLD 11 INJ. D:0.80	65106605	LPG			●																	
	GAS MANIFOLD 11 INJ. D:1.32	65106302	NAT			●																	
	GAS MANIFOLD 13 INJ. D:0.76	65104223	LPG	●																			
	GAS MANIFOLD 13 INJ. D:1.25	65104302	NAT	●	●																		
0160	CLIP	61010050		●	●	●																	
0200	GAS SECTION																						
0201	GAS VALVE	60001575		●	●																09/11		
	GAS VALVE	65104254		●	●	●														10/11			
0204	SPARK GENERATOR	60001576		●	●																09/11		
	SPARK GENERATOR	65104653		●	●	●														10/11			
0214	GAS TUBE	60001577		●	●																09/11		
	PIPE (GAS VALVE/BURNER)	65104230		●	●	●														10/11			
0216	GROMMET	60000624		●	●	●														10/11			
	GROMMET	60001578		●	●	●															09/11		
0217	UNION (3/4»)	65104326		●	●	●																	
0218	UNION (1/2»)	65104327		●	●	●																	
0250	GAS TUBE	65104251		●	●	●																	
0251	EPDM PIPE	65104296		●	●	●																	
0270	GASKET (SPARK GENERATOR)	574279		●	●	●																	
0281	O-RING 22.22X2.62	65104304		●	●	●																	
0282	SHEET GASKET D: 24-18.2-1.5	60022835-01		●	●	●																	
0283	O-RING 17.17X1.78	65104303		●	●	●																	
0300	FAN ASSEMBLY																						
0301	THERMOSTAT 75-65°C	999539		●	●																		
0302	AIR PRESSURE SWITCH 50 Pa	65104671-01				●																	
0303	FAN	65104357	Nota 2			●																	
	FAN (Venturi metal)	65110422	Nota 1			●																	
0310	FLUE (EXHAUST MANIFOLD/HEADER)	65105393				●																	
0311	AIR INTAKE COVER	573329				●																	
0312	FLUE INTAKE PLUG	65104295				●																	
0313	COMBUSTION CHAMBER 24CF	65104218		●	●																		
0314	COMBUSTION CHAMBER 24/28 FF	65106295				●																	
0315	CONDENSATE TRAP	65104623				●																	
0316	PANEL (INSULATION - FAN)	65104305				●																	
0317	SUPPORT (AIR PRESSURE SWITCH)	65104378				●																	
0318	VENTURI 15/24FF	65106516	Nota 2			●																	
	VENTURI 15/24FF Metal	65110421	Nota 1			●																	
0319	RESTRICTOR KIT	60001598				●																	
0371	COLLAR GASKET	65104258				●																	
0372	FAN GASKET	65104257				●																	
0373	GASKET	60000317				●																	
0374	CABLE INLET RUBBER WASHER	60000716		●	●	●																	
0400	SEALED CASE																						
0401	EXPANSION VESSEL 8L	65104261		●	●	●																	
0410	PANEL (COMBUSTION CHAMBER)	65104240		●	●																		
	PANEL (COMBUSTION CHAMBER)	65106296				●																	
0411	SIGHT GLASS	65104232				●																	
0412	SPRING FRONT PANEL (KIT)	65104298				●																	
0413	AIR RETURN COVER	65104249				●																	
0414	PANEL (FRONT - SEALED CHAMBER)	65105678-02				●																	
0415	CASE PANEL (L.H. SIDE)	65105676		●	●	●																	
0416	CASE PANEL (R.H. SIDE)	65105677		●	●	●																	
0417	CASE PANEL (FRONT)	65104299		●	●	●																	
0418	LOWER COVER	60001593		●	●	●																	
0420	EXPANSION VESSEL SUPPORT	65104696		●	●	●																	

Nota 1 : For appliances with main exchanger in copper - Nota 2 : For appliances with main exchanger in aluminium

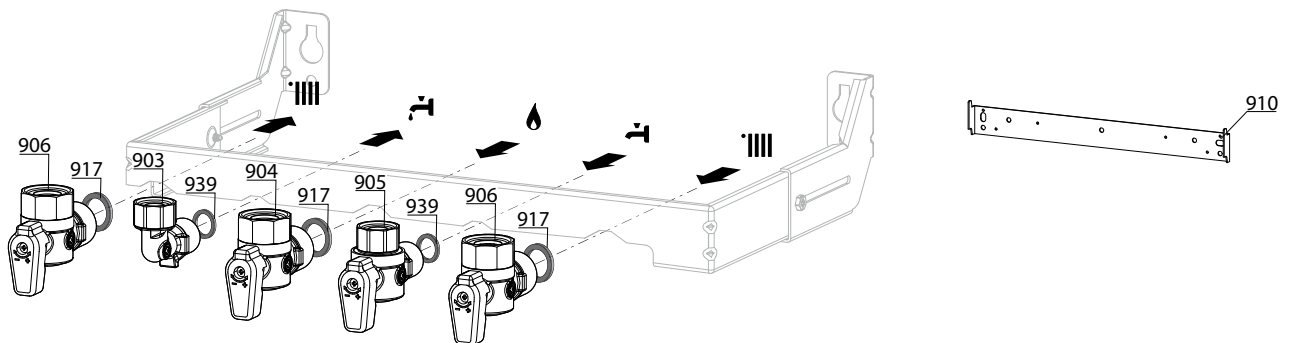


☉	Description	Manf. Pt. N	Type	 MATIS 24 CF - EU															 31	
				1	2	3	4	5	6	7	8	9	10	11	12	13	14	15	16	17
0500	FLOW GROUP																			
0501	FLOW GROUP KIT	60002320		•	•	•														
0502	TEMPERATURE PROBE + CLIP KIT	990686-01		•	•	•														
0503	PRESSURE RELIEF VALVE (3 BAR)	61312668		•	•	•														
0504	NTC PROBE	65104338		•	•	•														
0507	SANITARY HEAT EXCHANGER (16 P.)	65104333		•	•	•														
0512	PLUG	65104445		•	•	•														
0514	BY-PASS	65104336		•	•	•														
0515	GROMMET	60000808		•	•	•														
0521	HYDRAULIC GROUP SUPPORT	65104311		•	•	•														
0550	PIPE (SAFETY VALVE)	65104447		•	•	•														
0551	PIPE (C.H. FLOW)	65104252		•	•															
	PIPE (C.H. FLOW)	65106309	Nota 1			•														
	PIPE (C.H. FLOW)	60001302	Nota 2			•														
0552	BY-PASS PIPE	65104340		•	•	•														
0560	CLIP D:10	65104260		•	•	•														
0561	CLIP	61307589		•	•	•														
0562	CLIP D:18	65104259		•	•	•														
0563	CLIP	65104339		•	•	•														
0580	SHEET GASKET D: 13.9-10.4-1.5	60061853-02		•	•	•														
0581	O-RING 17.96X2.62	65104337		•	•	•														
0582	O-RING 17.86X2.62	61308091		•	•	•														
0583	O-RING 15.54X2.62	65104325		•	•	•														
0584	O-RING 11.91X2.62	60000850		•	•	•														
0585	O-RING 17.04X3.53	65104262		•	•	•														
0588	EXCHANGER GASKET	65104334		•	•	•														
0600	RETURN GROUP																			
0601	RETURN GROUP	65104335		•	•	•														
0602	LOW PRESSURE SWITCH	65105090				•														
0603	TEMPERATURE PROBE + CLIP KIT	990686-01		•	•	•														
0604	PUMP 4M 1V	60001584	WILO	•		•														
	PUMP 5M PWM ENER+	60001947	ENER +			•														
0605	MOTOR (3-WAY VALVE)	61302483-01		•	•	•														
0606	SENSOR (REED)	65104323		•	•	•														
0607	FLOW METER	65104317		•	•	•														
0610	MOTOR + SPRING 3 WAY VALVE KIT	60001583-01		•	•	•														
0612	PLUG	65104377		•	•	•														
0613	RIDUCTORS (KIT)	65104318		•	•	•														
0614	AUTO AIR VENT ENER+	65112086	ENER +			•														
	AUTO AIR VENT WITH O-RING WILO	65104703	WILO	•		•														
0615	KIT DRAIN SCREW	60001385		•	•	•														
0616	WATER FILTER	60001372		•	•	•														
0617	GROMMET	60000807		•	•	•														
0619	CHECK VALVE CARTRIDGE	65105323		•	•	•														
0620	FILLING TAP KIT	65114261		•	•	•														
0650	PIPE (EXPANSION VESSEL)	65104253		•	•	•														
0651	PIPE (C.H. RETURN)	60001271		•	•															
	PIPE (C.H. RETURN)	60001276	Nota 1			•														
	PIPE (C.H. RETURN)	60001304	Nota 2			•														
0660	CLIP D:10	65104260		•	•	•														
0661	CLIP	65104332		•	•	•														
0662	CLIP	61307589		•	•	•														
0663	U-CLIP	65104704		•	•	•														
0664	CLIP	65104322				•														
0665	CLIP	65104331		•	•	•														
0666	CLIP	60000309		•	•	•														
0667	CLIP	65100680		•	•	•														
0668	CLIP	65104316		•	•	•														
0669	CLIP	65104339		•	•	•														
0680	GASKET 3/8»	573521		•	•	•														
0681	O-RING 9.19X2.62	65104313		•	•	•														
0682	O-RING 17.04X3.53	65104262		•	•	•														
0683	O-RING 23.47X2.62	65104315		•	•	•														
0684	O-RING 3X35 EPDM 75 SH	65104705		•	•	•														
0685	O-RING 7.65X1.78	65104329		•	•	•														
0686	O-RING 15.54X2.62	65104325		•	•	•														
0687	O-RING 5.7X1.9	61009834-10		•	•	•														
0688	O-RING 21.89X2.62	65104320		•	•	•														
0689	O-RING 17.17X1.78	65104303		•	•	•														
0690	O-RING 8.9X2.7	61009834-14		•	•	•														
0691	O-RING 17.86X2.62	61308091		•	•	•														

Nota 1 : For appliances with main exchanger in copper - Nota 2 : For appliances with main exchanger in aluminium



900



5000

<p>5001 Transf. gaz > GPL Conv. gas > GPL Trasn. gas > GPL Transf. gas > GPL</p>	<p>5002 Transf. gaz > Nat Conv. gas > Nat Trasn. gas > Met Transf. gas > Met</p>	<p>5020 Options Accessories Opzioni Accessorio</p>
---	---	---

LIST OF THE ABBREVIATIONS

HW	: Hot water.
CW	: Cold water.
C	: Ceramic resistance (normal heating).
Ca	: Ceramic resistance (accelerated heating)
TP	: Immersion heater.
1F	: With fittings.
2F	: Without fittings.
3F	: With fittings and another outlet connection.
AMI	: With mixing valve.
SMI	: Without mixing valve.
PUISS	: Power of th appliance.
PN	: Appliance with normal pression.
LP	: Appliance with low pression.
PV	: Appliance with variable power.
PF	: Appliance with fixed power.

IDENTIFICATION PLATE

SERIAL NUMBER

10 Characters :	04 05 125 011	Sequential number
		Manufacturing day
		Year of manufacture
11 Characters :	1 95 065004 - 31	Technical number of the appliance
Month of manufacture : from 1 to 9 → Jan. to Sep., O → Oct., N → Nov., D → Dec.		Sequential number
		Year of manufacture
19 Characters :	08 05 0013199 900640031	Product reference
Year of manufacture		Sequential number
Month of manufacture		
20 Characters :	3675007 XX 2 07 070 00315	Sequential number
Product reference		Manufacturing day
Millenium of manufacture		Year of manufacture
21 Characters :	3675007 XX 07 070 0000315	Sequential number
Product reference		Manufacturing day
Year of manufacture		